

FINAL PROGRAM



22-24 October 2014



Universidade do Porto
Faculdade de Engenharia
FEUP

Organized by



Sponsored by



Universidade do Minho



Contents

Badges	4
Best Paper Award	5
Conference Location	2
Conference Proceedings	4
General Information	4
Meeting Rooms	4
Need Help?	5
Notes	12
Registration	4
Room Legend	5
Session Chairs Information	8
Social Event and Lunches	5
Tickets	4
Quick Program Overview	9
Scientific Program	13
Wednesday, October 22	13
Thursday, October 23	19
Friday, October 24	25
Conference Dinner and Location	24
Conference Location	29
Room numbers	30
ESM'2015	28
EUROSIS Info	34

General Information

1. Conference Location

The **ESM'2014 Conference** is being held at the Faculty of Engineering (FEUP) University of Porto



Faculdade de Engenharia da Universidade do Porto
Rua Dr. Roberto Frias
4200-465, Porto
Portugal
☎ Tel: +351 225081639
✉ Email: secdegi@fe.up.pt (put ESM'2014 in the subject line)

The registration desk will be placed in the hallway on the ground floor from Wednesday morning October the 22nd onwards, where registration will start at 08.00 and will end at 5.00 p.m. On Thursday October 23rd registration will be from 8.30 a.m. - 5.00 p.m. with Friday registration only from 9.00 a.m.- 9.30. a.m. The way to the conference and desk will be signposted.

ALL MAJOR MAPS ARE AT THE BACK OF THIS PROGRAMME

How to reach the conference location in Porto:

By Plane

Porto is served by [Francisco Sa Carneiro Airport \(IATA: OPO\)](#) which is located some 15km to the north-west of the city centre. The airport is served by [Line E of Porto Metro](#), linking it to downtown Porto, pendolino trains and Estadio do Dragao, and by transfer to other urban centres of Greater Porto: in Verdes station to Vila do Conde and Pavia de Varzim (using line B), Fonte do Cuco station to Maia (line C), and Senhora da Hora station to Matosinhos (line A).

[STCP Buses](#) link the airport and the city. Individual fare is EUR 1.20. AEROBUS is a relatively fast connection between the Airport and downtown Porto, including the city's leading Hotels, every 30 minutes, from 07h45m till 19h15m. The fare is EUR 4.00 and the ticket is valid on all STCP lines, until midnight of the same day. There is also a bus service to/from Vigo (Galiza/Spain) twice a day on weekdays, and once a day during the weekend.

The average fare for a taxi between the Airport and the city centre is around EUR 20.00. Volumes exceeding 55x36x20cm which need to be carried in the luggage compartment are charged EUR 1,50

General Information

By Train

Porto's main [railway](#) station is situated in Campanha, on the main line to Lisbon. From here, both metro and suburban rail services go to the city centre. The main central station is at Sao Bento, which is itself a notable attraction.

By Bus

The city has an extensive bus network run by the [STCP \(Sociedade dos Transportes Colectivos do Porto, or Porto Public Transport Society\)](#) which also operates lines in the neighbouring cities of Gaia, Maia and Gondomar. Search for a bus-stop of the bus number 6, which takes you direct to the University.

By Metro

The [Porto Metro system](#) has at present five lines: lines A (blue), B (red), C (green) and E (purple) all begin at Estadio do Dragao (home to FC Porto) and terminate at Senhor do Matosinhos, Pavia de Varzim (via Vila do Conde), ISMAI (via Maia) and Francisco Sa Carneiro airport respectively. Line D (yellow) currently runs from Hospital S. Joao in the north to Joao de Deus on the southern side of the Douro river. The lines intersect at the central Trindade station.

This is the best way for reaching the conference. FEUP is about 300 m away from the final station. Take the Metro YELLOW line (Line D) in the centre of the town in the direction of "P. Universitario" and get out on this last stop.

The system uses the ["Andante" ticketing system](#), the first fully contactless ticketing system used in public transportation in the world. See a map for help [here](#)

You can download copies of the metro maps here. [Map 1](#)  or [Map 2](#) 

By Taxi

[Taxicabs](#) are available throughout the city and are recognizable as cream sedans (usually Mercedes-Benz models). Within the city, the rates charged are those shown in the meter at the end of the ride. For other areas the fare is calculated at 0.35 EUR per Km after leaving the city limits. Any tolls (round trip) are paid by the client. On Saturdays, Sundays and national holidays, and Monday to Friday between 10 p.m. and 6 a.m., a 20% rate applies to normal fares.

Two companies working in the Porto area are:

- Radio Taxis Os Unidos - Tel: 225029898
- Invicta Radio Taxis do Porto - Tel: 225076400

General Information

2. Badges

Each registrant will receive a name badge upon registration. **The badge must be worn, in order to be admitted to the technical sessions, lunches and social event.**

3. Tickets

Extra tickets for the social event and lunches are available from the registration desk. Price: (or equivalent in another currency) for extra tickets

Extra conference dinner	€ 60
Extra lunch ticket	€ 25

4. Registration

The ESM'2014 Registration Desk will be open for information and registration:

Wednesday, October 22..... 8.00 a.m. to 5.00 p. m.
 Thursday, October 23..... 8.30 a.m. to 5.00 p. m.
 Friday, October 24 8.30 a.m. to 9.00 a.m.

The location of the registration desk will be signposted

5. Conference Proceedings

Each fully paid registrant will be provided with a copy of the Conference Proceedings (printed format). **This is NOT applicable to students who are not authors and who have not fully registered.**

(Extra copies are available on a cash and carry basis at special rates during **ESM'2014**)

Price: (or equivalent in another currency) for an extra copy

ESM'2014 Proceedings CASH AND CARRY	€ 50
-------------------------------------	------

6. Meeting Rooms

The ESM'2014 conference will be held in **rooms designated A, B and C** in this programme. You will find an overview of the meeting room numbers at the back of this programme and in the scientific overview pages.

General Information

The way to the rooms will be signposted. WIFI-Internet and electrical connections are available in every room. WIFI login information will be available from the registration desk.

7. Need Help?

Please see the conference desk for your questions

8. Social Events and Lunches

All registrants are invited to

All **Coffee Breaks** are served in the hallway in front of the meeting rooms.
The lunches are served in **the INEGI restaurant.**

The Conference Dinner

All participants are invited to the conference dinner on **THURSDAY** the 23rd of October. As we need to give an exact number of participants we would appreciate **your confirmation at the desk before Wednesday evening.**

The dinner will be held at:



Restaurant Abadia
Rua Ateneu Comercial do Porto
22
4000 Porto, Portugal
☎ Tel: [+351 22 200 8757](tel:+351222008757)

9. Room Legend

The parallel meeting rooms will be designated **ROOM A B and C** (The room legend can be found at the back of this programme and in the overview itself). Signposts will indicate the room number above each door.

10. Best Paper Award

During the conference the papers, which were accepted as **extended** papers will be judged by the committee in order to choose the best paper of the ESM'2014 conference.

General Information

Session Chairs information

ALL SESSION CHAIRPERSONS IN THIS PROGRAM ARE PROVISIONAL

Session Chairs are chosen on a voluntary basis by proposals by either authors or local committee members or are appointed by the Track Chairs, General Program Chair or General Conference Chair. They are responsible for their assigned session. They make sure their speakers are available, take care of the timing within the session, chair the discussion after each presentation and introduce each speaker based on the CV's given to them by the authors. **If a session chair is not available then the first author takes on the responsibility to chair** In case they chair a session featuring **extended papers**, then they are required to distribute and collect the reviews of that or those papers at the beginning and end of the session. If they have time they should also indicate in their papers the number of session participants.

THE NUMBERS NEXT TO THE PRESENTATIONS DENOTE THE PAGE-NUMBERS IN THE PROCEEDINGS. IF NO NUMBERS ARE MENTIONED THEN THIS PAPER IS NOT PUBLISHED IN THE PROCEEDINGS

THE AUTHORS WHO ARE UNDERLINED ARE NORMALLY THE PRESENTERS

PAPERS IN GREY BOXES ARE THE EXTENDED PAPERS ELIGIBLE FOR THE BEST PAPER AWARD

CHECK OUT THE OTHER EUROSIS EVENTS ON OUR WEBSITE:

<http://www.eurosis.org>

WEDNESDAY, 22nd OCTOBER 2014

08.00-17.00	REGISTRATION		
09.00-09.15	WELCOME BY ANTONIO CARVALHO BRITO – ESM'2014 CONFERENCE CHAIR - ROOM A		
09.15-10.00	KEYNOTE ADDRESS BY JERZY RESPONDEK - ROOM A - B032		
10.00-10.30	COFFEE BREAK		
10.30-12.30	PARALLEL SESSIONS		
	ROOM A B032	ROOM B B120	ROOM C B338
	SIMULATION METHODOLOGY	ELECTRONIC NETWORKS SIMULATION	FLUID FLOW SIMULATION
12.30-14.00	LUNCH BREAK		
14.00-15.00	KEYNOTE ADDRESS BY ANDREW ELLIOTT - ROOM A - B032		
15.00-15.30	COFFEE BREAK		
15.30-18.00	PARALLEL SESSIONS		
	ROOM A B032	ROOM B B033	ROOM C B029
	HARDWARE SIMULATION	ROAD TRAFFIC AND LOGISTICS SIMULATION I	ENERGY MANAGEMENT I
18.30-.....	FREE EVENING		

THURSDAY, 23rd OCTOBER 2014

08.30-17.00	REGISTRATION		
09.00-10.00	KEYNOTE ADDRESS BY JAAP VAN DEN HERIK - ROOM A - A104		
10.00-10.30	COFFEE BREAK		
10.30-12.30	PARALLEL SESSIONS		
	ROOM A A104	ROOM B B231	ROOM C B338
	SIMULATION SOFTWARE TOOLS	ROAD TRAFFIC AND LOGISTICS SIMULATION II	PRODUCTION STREAMLINING SIMULATION
13.00-14.00	LUNCH BREAK		
14.00-15.00	PARALLEL SESSIONS AND VISIT TO INEGI		
	ROOM A A104	ROOM B B231	ROOM C B338
	FIRE SIMULATION	TUTORIAL	ENERGY MANAGEMENT II
15.00-15.30	COFFEE BREAK		
15.30-18.00	PARALLEL SESSIONS		
	ROOM A A104	ROOM B B231	ROOM C B338
	DATA SIMULATION AND LEARNING SYSTEMS	MANAGEMENT SIMULATION	MANUFACTURING OPTIMIZATION
20.00 – 22.30	CONFERENCE DINNER at Abadia		

FRIDAY, 24th OCTOBER 2014			
09.00-09.30	REGISTRATION		
09.30-10.00	COFFEE BREAK		
10.00 12.00	PARALLEL SESSIONS		
	ROOM A B032	ROOM B A104	ROOM C B338
	FINANCIAL SIMULATION	HOSPITAL LOGISTICS	MOTION SIMULATION
12.00-12.15	CLOSING SESSION AND BEST PAPER AWARD ROOM A B032		

Notes

NOTES

Wednesday, 22nd October 2014

HALLWAY

Registration

08.00 - 17.00

ROOM A – B032

09.00 – 09.15

Opening ESM'2014 and Welcome

Welcome Address

Antonio Carvalho Brito

FEUP

University of Porto

ESM'2014 General Conference Chair

João Manuel Tavares

FEUP

University of Porto

ESM'2014 General Conference Chair

ROOM A-B032 09.15-10.00

KEYNOTE

KEYNOTE SPEECH

Chair: Antonio Carvalho Brito, FEUP – University of Porto, Portugal



Tree data structures in the synthesis of effective computational algorithms with special focus on algorithms operating on the special matrices

Jerzy Respondek, Silesian University of Technology, AEI Faculty, Dept. of Computer Science, Gliwice, Poland

Welcome

Wednesday, 22nd October 2014

10.00 - 10.30
COFFEE BREAK

10.30 – 12.30

ROOM A – B032 - 10.30-12.30 **METH**
SIMULATION METHODOLOGY
 Chair: Antonio Carvalho Brito, FEUP – University of Porto, Portugal

OPT_09
Accelerating the Convergence of Parameter Search Techniques during Simulation based Optimization by Dimension Reduction Methods
Raphael-Elias Reisch, Christian Schröder and Christoph Laroque 13

METH_04
Towards Holistic Modeling and Simulation of Discrete Event and Individual Based Behavior
Nikolaus Furian, Dietmar Neubacher, Siegfried Vössner, Michael O'Sullivan and Cameron Walker 20

METH_11
Causality Test for Non Stationary Time Series
Farai F.Mlambo and Igor N.Litvine 29

METH_10
Modelling the Temperature and pH Decline Early Post-Mortem of Beef Carcasses
Cristina Xavier, Ursula Gonzales-Barron, Vasco Cadavez and Alexandra Muller 32

ROOM B- B120 - 10.30-12.00 **ELECTRO**
ELECTRONIC NETWORKS SIMULATION
 Chair: Carlos Bragança de Oliveira, FEUP – University of Porto, Portugal

METH_08
Co-Simulation of Complex Multi-Physics Systems: Aeronautical Example
Romarc Guillerm, Hamid Demmou, Alexandre Nketsa and Jean-Jacques Carrillo 203

Wednesday, 22nd October 2014

AGENT_05

Multi-Agent Solution for a Self Mediator Sensor Network

Anton Ivaschenko and Anton Minaev 209

TOOLS_02

A Simulation Framework for Testing Collaborative P2P/ISP Traffic Engineering Mechanisms

Pedro Sousa..... 213

ROOM C- B338 - 10.30-12.30

FLUID

FLUID FLOW SIMULATION

Chair: Jan Studzinski, Polish Acad. of Sciences, Warsaw, Poland

FLUID_01

Modeling and simulation of the CANDU 6 containment using Ansys CFX

R. Arsene, I. Prisecaru, D. Dupleac and S. Nicolici 371

FLUID_02

A Contribution to the Computational Fluid Dynamics Simulation of Manufacturing Tolerances in Process Industry and their Impact on the Symmetry of the Solutions

Peter Farber, Karin Farber, Nadine Kaczmarkiewicz, Sebastian Krick, Norman Kroppen and Youssef Marhoussi 376

FLUID_04

A Computational Fluid Dynamics Investigation of Condensation in Greenhouses

Nico Decker, Karin Farber, Peter Farber, Jens Gräbel, Sebastian Krick and Peer Ueberholz..... 382

BIO_01

Simulation of Collateral Flow Concept Embodied in a Circuit Based Model

Henrikas Pranevicius, Darius Naujokaitis, Vytautas Pilkauskas, Osvaldas Pranevicius and Mindaugas Pranevicius 387

12.30 - 14.00

LUNCH BREAK

Wednesday, 22nd October 2014

14.00 – 15.00

ROOM A- B032 - 14.00-15.00

KEYNOTE

KEYNOTE PRESENTATION

Chair: Antonio Carvalho Brito, FEUP – University of Porto, Portugal



INV_02

Simulations and simulacra: history in video games

Dr Andrew Elliott, Senior Lecturer in Media and Cultural Studies, University of Lincoln, Lincoln, United Kingdom

15.00 - 15.30

COFFEE BREAK

15.30 - 18.00

ROOM A- B032 - 15.30-18.00

HARD

HARDWARE SIMULATION

Chair: Rosaldo Rossetti, FEUP - University of Porto, Porto, Portugal

PAR_01

Performance Simulation of Heterogeneous Computing Systems

Jussi Hanhiova and Vesa Hirvisalo 59

AGENT_07

Impact of Message Filtering on HPC Agent Based Simulations

Claudio Márquez, Eduardo César and Joan Sorribes 65

PAR_03

**A Method for Porting HEP Software Geant4 and Root to Intel Xeon Phi
Hardware Accelerator**

Pierre Schweitzer, Claude Mazel, Cristina Cârloganu and David R.C. Hill 73

Wednesday, 22nd October 2014

PAR_04

Numerical Reproducibility, Portability and Performance of Modern Pseudo Random Number Generators: Preliminary study for parallel stochastic simulations using hybrid Xeon Phi computing processors

Van Toan Dao, Hong Quang Nguyen, Lydia Maigne, Vincent Breton, Claude Mazel and David R.C. Hill 80

SIM_AI_04

Performance Analysis of a 240 Thread Tournament Level MCTS Go Program on the Intel Xeon Phi

Ali Mirsoleimani, Aske Plaat, Jos Vermaseren and Jaap van den Herik..... 88

15.30 - 17.30

ROOM B- B033 - 15.30-17.30

LOGIS

ROAD TRAFFIC AND LOGISTICS SIMULATION I

Chair: Guilherme Pereira, University of Minho, Portugal

EMER_01

A Route Assignment Approach to Vehicle Emergency Evacuation

Dalila Lima, Miguel Sandim, Paula Fortuna and Rosaldo J. F. Rossetti..... 221

TOOLS_04

Benchmarking Trajectory Matchers with SUMO

Jakob Erdmann and Rüdiger Ebendt..... 226

TOOLS_06

Verification of the Real Time Fuzzy Control System using UPPAAL Model Checker

Henrikas Pranevicius, Mindaugas Snipas, Vytautas Pilkauskas and Tadas Kraujalis..... 231

LOGIS_03

Optimisation of Vessel Journeys for Oil Products Distribution

Hoang Thi Minh Ha and Gerrit K. Janssens 245

Wednesday, 22nd October 2014

ROOM C- B029 - 15.30-17.30

MGMT

ENERGY MANAGEMENT I

Chair: Carlos Bragança de Oliveira, FEUP – University of Porto, Portugal

AGENT_04

A Novel Multi-Agent Based Architecture for Optimal Energy Distribution and Concurrent Fault Restoration of Smart Grids

Aymen Jaouadi, Olfa Mosbahi, Mohamed Khalgui and Fahima Ghniya **339**

CLOUD_01

Evaluation of Energy Consumption and QoS in the Four-Stage Scheduling in a Private Green Cloud Using Simulation

Oswaldo A. de Carvalho Junior, Sarita M. Bruschi, Regina H. C. Santana and Marcos J. Santana **347**

AGENT_16

Agent-based modelling for designing an EV charging distribution system: a case study in Salvador of Bahia

Jose Evora, Jose Juan Hernandez, Daniel Barbosa and Paulo Nazareno Maia Sampaio **353**

TOOLS_14

Simulation Tools for Integration Management Processes of Dispersed Generation in Micro-Grid Supplied by Prosumers

Eugeniusz M. Sroczan **358**

18.00 -

FREE EVENING

Thursday, 23rd October 2014

HALLWAY

Registration

08.30 - 17.00

09.00 – 10.00

ROOM A-A104 - 09.00-10.00

KEYNOTE

KEYNOTE PRESENTATION

Chair: Antonio Carvalho Brito, FEUP – University of Porto, Portugal



INV_02

User-Centered Design and a Single European Sky

Liesbeth Boer, Aske Plaat and

Jaap van den Herik..... 5

10.00 - 10.30

COFFEE BREAK

10.30 - 12.30

ROOM A- A104 - 10.30-12.00

TOOLS

SIMULATION SOFTWARE TOOLS

Chair: Feliz Manuel Teixeira, FEUP- University of Porto, Porto, Portugal

TOOLS_08

Simulation Tools for Robotics: Survey and Comparison

Torben Cichon, Malte Rast and Juergen Rossmann 39

TOOLS_13

Towards NetLogo and JADE integration: An Industrial Agent-in-the-loop approach

João Reis, Rosaldo Rossetti and Gil Gonçalves 47

Thursday, 23rd October 2014

OPT_04
Simulation of Openflow Scenarios Based on the NSDL Framework
 Talita R. Pinheiro, Ramon R. Fontes,
 Paulo N. M. Sampaio and Eduardo M. D. Marques..... 52

ROOM B- B231 - 10.30-12.30 **LOGIS**
ROAD TRAFFIC AND LOGISTICS SIMULATION
Chair: Ana Luísa Ramos, University of Aveiro, Aveiro, Portugal

LOGIS_01
E-Mobility in Logistics: A Qualification-Process-Gap Model
 Matthias Klumpp, Torsten Marnier and Hella Abidi 239

OPT_07
**Integrated Inventory-Transportation Problems with Common Carrier
 Freight Charges**
 Rawee Suwandechochai and Gerrit K. Janssens..... 249

OPT_14
**A new Approach of Linking Mathematical Optimization and Discrete-Event
 Simulation for Operating Transshipment Terminals in the Parcel Delivery
 Industry**
Daniel Diekmann, Jens Baudach and Uwe Clausen 254

TOOLS_16
3D Microsimulation of Milkruns and Pickers in Warehouses using SIMIO
António Vieira, Luís S. Dias, Guilherme B. Pereira, José A. Oliveira,
 M. Sameiro Carvalho and Paulo Martins 261

ROOM C- B338 - 10.30-12.30 **CIM**
PRODUCTION STREAMLINING SIMULATION
Chair: José António Barros Basto, FEUP - University of Porto, Portugal

OPT_12
**Reducing Simulation Costs in APCRSS Algorithm for Job Scheduling
 Problems**
Shell Ying Huang and Ya Li..... 291

SUP_03
Apparel Mass Customization Modelling and Size Effect
Jocelyn Bellemare 296

Thursday, 23rd October 2014

SUP_01

Comparing Card Based Production Control Mechanisms in MTO Production

João Mortágua, Nuno O. Fernandes and S. Carmo-Silva 303

ANA_01

An Agent Based Simulation Approach to the Circular Two Dimensional Open Dimension Problem

João Pinho Ribeiro and Rosaldo J. F. Rossetti

12.30 - 14.00

LUNCH BREAK

14.00 - 15.00



A guided visit to INEGI is organized for those participants who are interested to visit the labs.

<http://www.inegi.pt/inicial.asp?k=z&LN=EN>

ROOM A- A104 - 14.00-15.00

FIRE

FIRE SIMULATION

Chair: João Manuel Tavares, FEUP - University of Porto, Porto, Portugal

BIO_04_ENV

Handling Back Fire in Forest Fire Spread Modelling

Yves Dumond 411

TOOLS_01

Algebra applied to the Multimodeling of Fire Protection Systems

Houda Chanti, Laurent Thiry, Michel Hassenforder and Philippe Fromy 419

ROOM B- B231 - 14.00-15.00

TUT

TUTORIAL

Chair: Feliz Manuel Teixeira, FEUP- University of Porto, Porto, Portugal

TUT_01

How to use Quaternions on Modelling Rotations in 3d Space

Feliz Manuel Teixeira, FEUP- University of Porto, Porto, Portugal

Thursday, 23rd October 2014

ROOM C- B338 14.00-15.00 **MGMT**
ENERGY MANAGEMENT II
 Chair: Luís Miguel Dias, University of Minho, Portugal

OPT_05
New Pipelined-based Solutions for Optimal Reconfigurations of Real-Time Systems
Maroua Gasmí, Olfa Mosbahi, Mohamed Khalgui and Luis Gomes **361**

ANA_02
Automatic Simulation Calibration: An Evaluation of Search Based Metaheuristics Applied to IEC 61131-3 Based Automation in the Power Systems Domain
Cláudio Silva, Rosaldo J. F. Rossetti and Jorge C. Pereira..... **429**

15.00 - 15.30
COFFEE BREAK

15.30 – 18.30

ROOM A- A104 -15.30-18.30 **DATA**
DATA SIMULATION AND LEARNING SYSTEMS
 Chair: Luís Miguel Dias, University of Minho, Portugal

OPT_10
Ordering Data Sets by generating Graph Structures
Jürgen Klüver and Christina Klüver **97**

SIM_AI_02
Simulation of the Ensemble Generation Process: The Divergence between Data and Model Similarity
Fabio Pinto, Carlos Soares, Joao Mendes-Moreira and Rosaldo J. F. Rossetti..... **103**

SIM_AI_01
A Stochastic Analysis of Nested Transactions Success Ratio in RTDBS
 Mourad Kaddes, Laurent Amanton, Majed Abdouli, Alexandre Berred, Bruno Sadeg and Rafik Bouaziz..... **108**

Thursday, 23rd October 2014

PRED_SIM_01 New Solutions for Feasible Secured Reconfiguration of Embedded Control Systems <u>Rim Idriss</u> , <u>Adlen Loukil</u> and <u>Mohamed Khalgui</u> 119

SIM_AI_05 Centralized Versus Decentralized Team Coordination using Dynamic Scripting <u>Armon Toubman</u> , <u>Jan Joris Roessingh</u> , <u>Pieter Spronck</u> , <u>Aske Plaat</u> and <u>Jaap van den Herik</u> 129

AGENT_13 Analysing Collaborative Filtering algorithms in a Multi-Agent Environment <u>Tiago Cunha</u> , <u>Rosaldo J. F. Rossetti</u> and <u>Carlos Soares</u> 135
--

ROOM B- B231 - 15.30-18.00	MGMT
MANAGEMENT SIMULATION	
Chair: Antonio Carvalho Brito, FEUP – University of Porto, Portugal	

AGENT_11 On Modeling Uncertainty in Resource Division Processing using Game against Nature Approach <u>Krzysztof Skrzypczyk</u> 178

AGENT_01 Extroverted or Introverted Environmental Uncertainty and Performance of Organizational Aspirations <u>John Qi Dong</u> 184

AGENT_14 Comparing Centralized and Decentralized Multi-Agent Approaches to Air Traffic Control <u>Álvaro Câmara</u> , <u>Daniel Castro Silva</u> , <u>Eugénio Oliveira</u> and <u>Pedro Henriques Abreu</u> 189
--

BIO_06_ENV Computer Aided Planning of Water Nets Revitalization <u>Jan Studzinski</u> and <u>Marek Kurowski</u> 194

METH_06 Nature Analogous Methods for Everybody Applications to Human Resource Management <u>Christina Klüver</u> and <u>Jürgen Klüver</u> 171

Thursday, 23rd October 2014

ROOM C- B338- 15.30-17.30 **CIM**
MANUFACTURING OPTIMIZATION
Chair: José Fernando Gonçalves, FEP- University of Porto, Portugal

PAR_06
Distribution Simulation Framework
Carlos Bragança de Oliveira and António Carvalho Brito **313**

PETRI_01
Faults and Fault Propagation Modeling in Manufacturing Systems based on Colored Petri Nets
Miklós Gerzson, Adrien Leitold and Katalin M. Hangos **327**

PETRI_02
On-Line Qualitative Model Based Diagnosis of Technological Systems using Colored Petri Nets
Adrien Leitold, Miklós Gerzson, Anna I. Pózna and Katalin M. Hangos **332**

OPT_02
Machine and Engine Adjustment
William Conley..... **321**

CONFERENCE DINNER – 20.00 -23.00

All participants are invited to the conference dinner which will be held from 20.00 to 23.00 at Restaurant Abadia



Restaurant Abadia
 Rua Ateneu Comercial do Porto 22
 4000 Porto, Portugal
 ☎ Tel: [+351 22 200 8757](tel:+351222008757)

Google location :

<https://www.google.pt/maps/place/Restaurante+Abadia+do+Porto/@41.148874,-8.60679,17z/data=!4m2!3m1!1s0xd2464e51e3695a9:0xc329c61f23de839e?hl=pt-PT>

Friday, 24th October 2014

HALLWAY

Registration

09.00 - 09.30

09.30 - 10.00

COFFEE BREAK

10.00 – 12.00

ROOM A- B032 - 10.00-12.00

FINANCE

FINANCIAL SIMULATION

Chair: Carlos Bragança de Oliveira, FEUP – University of Porto, Portugal

AGENT_10

The Potential of Object-Oriented Analysis and Design for Agent-based Computational Economics

Tuong Manh Vu, Peer-Olaf Siebers and Christian Wagner 143

TOOLS_10

Analysis by State: An Alternative View on Discrete Event Time Series

Arne Koors and Bernd Page..... 150

RAND_01

Estimation of VaR and CVaR from Financial Data using Simulated Alpha-Stable Random Variables

Kristina Sutiene, Audrius Kabasinskas, Dalius Strebeika,

Milos Kopa and Roland Reichardt 159

AGENT_02

Incomplete Information and Learning in Dynamic Price Discrimination in Competitive Environments

Maria Paula V. Cicogna and Celma O. Ribeiro..... 164

Friday, 24th October 2014

ROOM B – A104 - 10.00-11.30 **LOGIS**

HOSPITAL LOGISTICS

Chair: Manuel Pina Marques, FEUP - University of Porto, Portugal

TOOLS_05

Parameterized Modeling of Outpatient Departments in University Hospitals

Byoung K. Choi, Hyeonsik Kim and Donghun Kang 273

INTEI_01

Simulating a Multi-Level Priority Triage System for Maternity Emergency

António Abelha, Eliana Pereira, Andreia Brandão, Filipe Portela,
Manuel Santos and José Machado 278

BIO_03

Scheduling Guidelines for a Multi-Room Proton Therapy Treatment Center

Stuart Price, Bruce Golden, Edward Wasil and Hao Howard Zhang 283

ROOM C – B338 - 10.30-11.30

MOTION

MOTION SIMULATION

Chair: João Manuel Tavares, FEUP - University of Porto, Porto, Portugal

BIO_08

Dynamic Simulation of Human Motion

Joao Ferreira Nunes, Luis Paulo Reis, Rosaldo J.F.Rossetti,
Pedro Miguel Moreira and João Manuel R. S. Tavares 395

OPT_06

Modelling of the Biodynamic Response of the Human Body to Fore and Aft Vibration

Naser Nawayseh 398

OPT_15

Modelling and Simulation of a 6DOF Motion Platform with Permanent Magnet Linear Actuators for Testing in Wind Tunnel

E. Thöndel 403

Friday, 24th October 2014

ROOM A – B032 - 12.00 - 12.15

BEST PAPER

CLOSING SESSION AND BEST PAPER AWARD

Chair: Antonio Carvalho Brito, FEUP – University of Porto, Portugal

EUROSIS

Philippe Geril, EUROSIS, Ostend, Belgium

Parallel Sessions - Friday

ESM'2015



**SEE YOU ALL
OCTOBER 2015, Leicester, United Kingdom
FOR ESM'2015**

IN COOPERATION WITH



UKRI-SPC

**Track proposals and tutorial proposals can be sent in by
January 30th, 2015**

**Proposals for future event locations can be emailed to
philippe.geril@eurosis.org**

**Information on all 2015 EUROSIS Events can be found on
<http://www.eurosis.org>**

Conference Site Maps

UNIVERSITY OF PORTO LOCATION MAP



FEUP- University of Porto Campus and Conference Location

Conference Site Maps

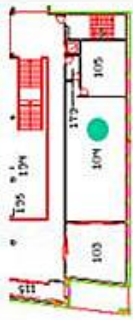
Rooms Legend Overview

22nd Morning	B032 (A) – from 8h30 to 12h30 B120 (B) – from 9h00 to 13h00 B338 (C) – from 10h00 to 13h00
22nd Afternoon	B032 (A) – from 14h00 to 18h30 B033 (B) – from 15h00 to 18h30 B029 (C) – from 15h00 to 18h30
23rd Morning	A104 (Sala de atos) (A)– from 9h00 to 13h00 B231 (B) – from 9h00 to 13h00 B338 (C) – from 10h00 to 13h00
23rd Afternoon	A104 (Sala de atos) (A) – from 13h00 to 18h00 B231 (B) – from 13h00 to 18h00 B338 (C) – from 15h00 to 18h00
24th Morning	B032 (A) – from 8h30 to 12h30 A104 (Sala de atos) (B)– from 9h00 to 12h00 B338 (C) – from 9h00 to 12h00

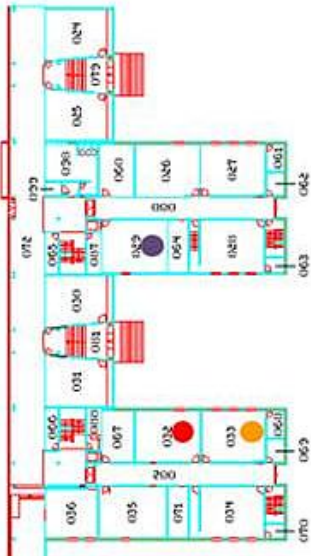
Conference Site Maps

Map of Meeting Rooms

Piso 1 – Edifício A



Piso 0 – Edifício B



Piso 1 – Edifício B



Piso 2 – Edifício B

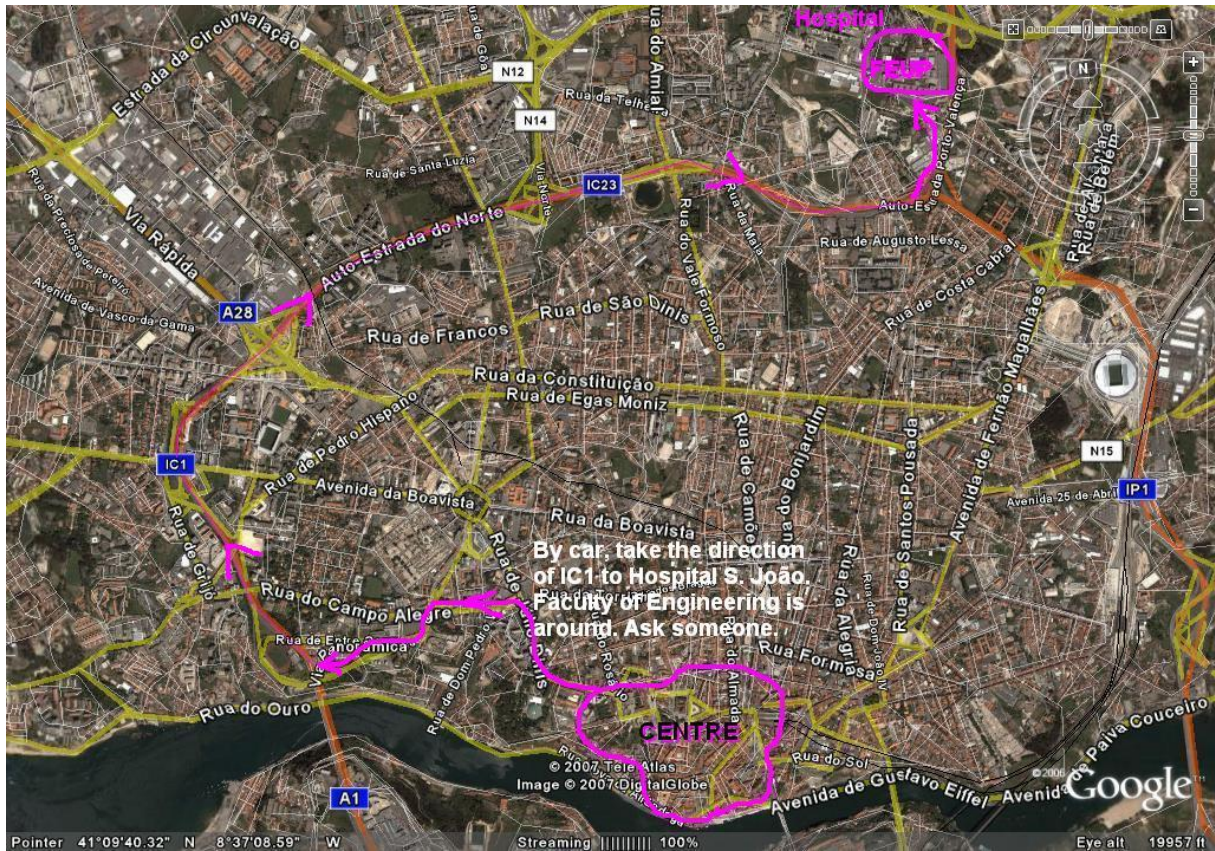


Piso 3 – Edifício B



- Sala B032 (anfiteatro 89px) – dia 22 (9h00/13h00) e 24 (9h00/12h30)
- Sala B033 (anfiteatro 53 px com projetor e pc) – dia 22 (15h00/18h30)
- Sala B029 (anfiteatro 99 px com projetor e pc) – dia 22 (15h00/18h30)
- Sala Alcs (sala plena 60 px com projetor; não tem pc) – dia 23 (09h00/13h00) e 24 (9h00/11h30)
- Sala B120 (sala plena 70 px, não tem projetor nem pc) – dia 22 (9h00/18h30)
- Sala B215 (sala plena 80 px não tem projetor nem pc) – dia 22 (10h00/13h00)
- Sala B231 (sala plena 70 px, não tem projetor nem pc) – dia 23 (09h00/18h30)
- Sala 338 (sala plena 70 px, não tem projetor nem pc) – dia 22 (10h00/13h00), dia 23 (10h00/13h00) e dia 24 (9h00/12h30)

Conference Site Maps



How to reach the University by Car



PORTO CITY CENTRE

eurosis

EUROSIS was borne out of discussions with the European Community to set up a new kind of Society, which would be project-driven instead of driven by pure membership and conferences.

The aim of the Society is to set up and manage topic related Technical Committees which will link directly to European Projects in the field of computer simulation and related areas and to act as a knowledge pool for future European Networks of Excellence, like MOSAIC.

If you would like to receive more information about EUROSIS, please contact

Philippe Geril
EUROSIS-ETI
Greenbridge Science Park
Ghent University – Ostend Campus
Wetenschapspark 1, Plassendale 1
B- 8400 Ostend, Belgium
 Tel: +32.59.255.330
 Fax: +32.59.255.339
 **Email: Philippe.Geril@eurosis.org**

Please send me info on EUROSIS:

Name:

Address:

.....

.....

Telephone.....

Fax:

Email:

ESM'2014 Registration Form

Please legibly print or type and fill out completely. (Check appropriate boxes where necessary)

FIRST NAME	LAST NAME	M.I.
COMPANY OR AFFILIATION		
Mailing address (tick one): <input type="checkbox"/> HOME <input type="checkbox"/> BUSINESS		
STREET		
CITY		
ZIPCODE	COUNTRY	
TELEPHONE	FAX	
E-MAIL		
DATE	SIGNATURE	
1. <input type="checkbox"/> EUROSIS member € 545 Member Number: _____		€ _____
2. <input type="checkbox"/> Members of Sponsor or Affiliate Society € 545		€ _____
3. <input type="checkbox"/> Non-Member Participant € 555		€ _____
4. <input type="checkbox"/> Students, <u>who are not authors</u> but who wish to attend the conference, or ONE DAY PARTICIPANTS pay: € 435		€ _____
(Above registration fees include, one copy of the PROCEEDINGS, all midday meals, cocktail, refreshments, coffees and social program.) One Day Participants and Non-Author Students cannot participate in the conference dinner.		
5. <input type="checkbox"/> Conference Tutorial only € 100		€ _____
6. <input type="checkbox"/> Conference Dinner Ticket for Companion € 60 <input type="checkbox"/> Lunch Ticket for Companion € 25/day		€ _____
7. <input type="checkbox"/> Extra Conference Proceedings € 50 Cash and Carry		€ _____
VAT Number if applicable: _____		
TOTAL AMOUNT DUE		€ _____
<hr/>		
<u>ADD BANK CHARGE of € 15 in case you pay by BANK or CHEQUE.</u>		€ _____
TOTAL AMOUNT REMITTED		€ _____

- [1] 1) Make payment by **BANK TRANSFER** to account **IBAN CODE: BE03 0014 0814 7784** EUROPEAN TECHNOLOGY INSTITUTE, ETI Bvba, BNP PARIBAS FORTIS BANK, Torhoutsesteenweg 356, B-8400 Ostend, Belgium, **SWIFT/BIC CODE: GEBABEBB MENTION YOUR NAME and ESM'2014**
- [1] 2) Or pay by **CHEQUE** and send it to Philippe Geril, EUROSIS-ETI, European Simulation Office, Greenbridge Science Park, Ghent University – Ostend Campus, Wetenschapspark 1, Plassendale 1, B-8400 Ostend, Belgium.
- [1] 3) Or pay by **CREDIT CARD** and fill in the information below:
 Charge my (tick one): Visa Euro/Mastercard American Express
 CARD NO: _____ : _____ : _____ : _____ EXP.DATE: ____ / ____

Authorizing Signature:

Print Signature in CAPITALS